

GUNNEDAH HOSPITAL REDEVELOPMENT - LANDSCAPE ARCHITECTURE PACKAGE



DRAWINGS REGISTER

| DWG | PLAN TITLE                                       | SCALE (A1) |
|-----|--|------------|
| L01 | LANDSCAPE COVERSHEET                             | 1:500      |
| L02 | LANDSCAPE NOTES AND LEGEND                       | -          |
| L03 | TREE RETENTION AND REMOVAL PLAN                  | 1:500      |
| L04 | LANDSCAPE GENERAL ARRANGEMENTS AND FINISHES PLAN | 1:200      |
| L05 | LANDSCAPE GENERAL ARRANGEMENTS AND FINISHES PLAN | 1:200      |
| L06 | LANDSCAPE SETOUT PLAN                            | 1:100      |
| L07 | LANDSCAPE SETOUT PLAN                            | 1:100      |
| L08 | PLANTING PLAN                                    | 1:100      |
| L09 | PLANTING PLAN                                    | 1:100      |
| L10 | PLANTING PLAN                                    | 1:100      |
| L11 | LANDSCAPE DETAILS                                | AS SHOWN   |
| L12 | LANDSCAPE DETAILS                                | AS SHOWN   |

NOTES:

PLANS ARE TO BE READ IN CONJUNCTION WITH OTHER DISCIPLINE PLANS INCLUDING ARCHITECTS, CIVIL ENGINEERS AND STRUCTURAL ENGINEERS PLANS AND SPECIFICATIONS

ALL WORKS INFERRED TO OR REQUIRED TO COMPLETE THE LANDSCAPING TO AUSTRALIAN STANDARDS MUST BE CARRIED OUT AS PART THIS CONTRACT.

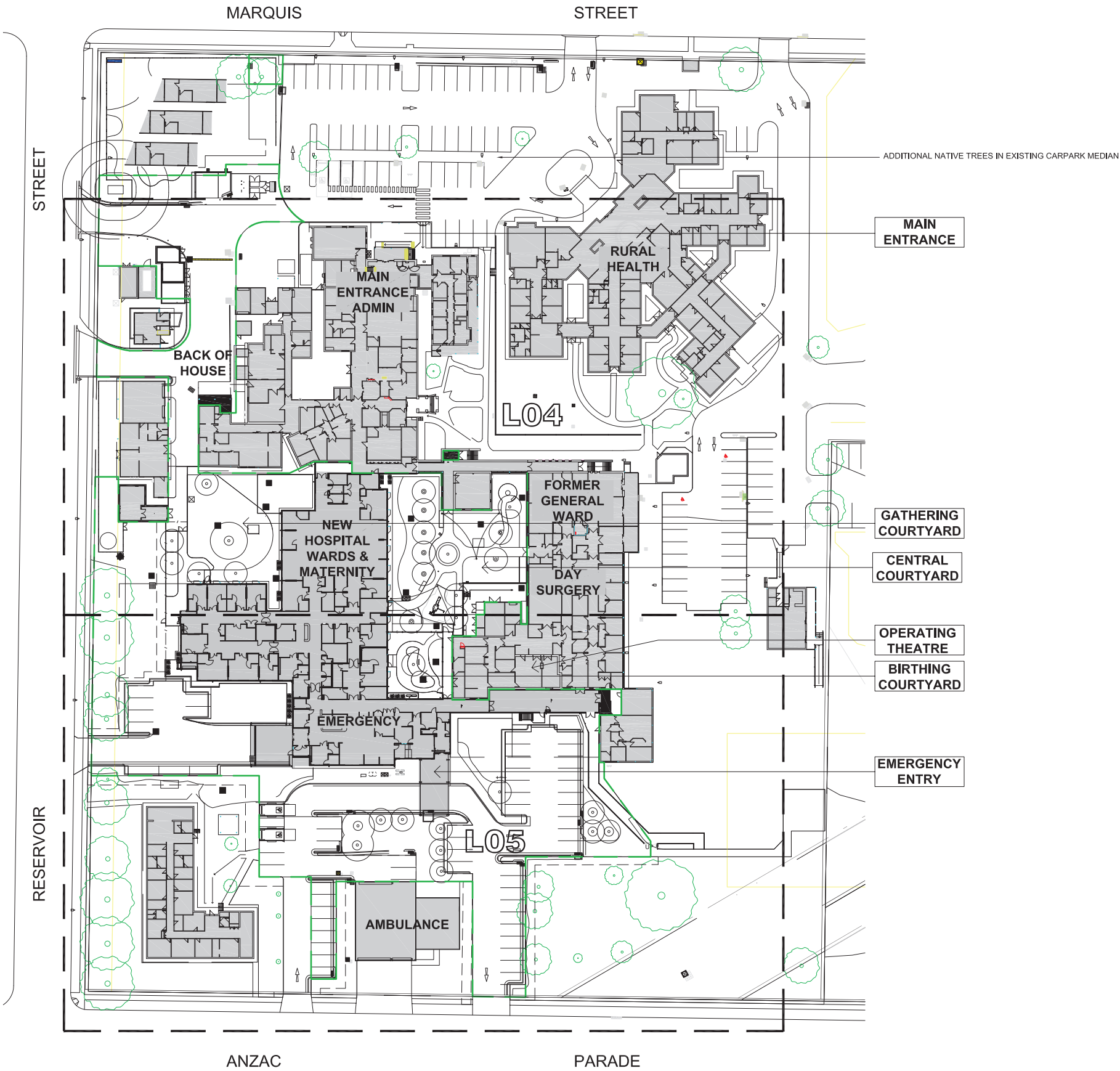


**DETERMINED – APPROVAL**

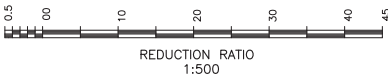
REF Approval No: 17/2023/B

Date: 2/9/2024

Signed by: 



|       |         |                               |
|-------|---------|-------------------------------|
| B     | 18.7.24 | ALTERNATIVE CENTRAL COURTYARD |
| A     | 7.6.24  | 100% DOCUMENTATION            |
| Adv   | 17.5.24 | 100% COORDINATION ISSUE       |
| Adv   | 22.3.24 | 70% DOCUMENTATION ISSUE       |
| Adv   | 15.2.24 | 40% DOCUMENTATION ISSUE       |
| Issue | Date    | Description                   |





**STEWART SURVEYS**  
Pty Ltd Inc in NSW ABN 65 002 886 508  
109 Conadilly Street  
P.O. Box 592  
GUNNEDAH NSW 2380  
T 02 67422966 F 02 67420684  
E office@stewartsurveys.com

Local people. Local knowledge.

Surveying, Environmental & Landscape Architecture

Client



Project

GUNNEDAH HOSPITAL REDEVELOPMENT

Title

LANDSCAPE COVERSHEET

|                         |              |         |      |
|-------------------------|--------------|---------|------|
| Date                    | 18 JULY 2023 | Job No. | 5668 |
| Drawing number          | L01          | Issue   | B    |
| DRAWING SHEET SIZE = A1 |              |         |      |

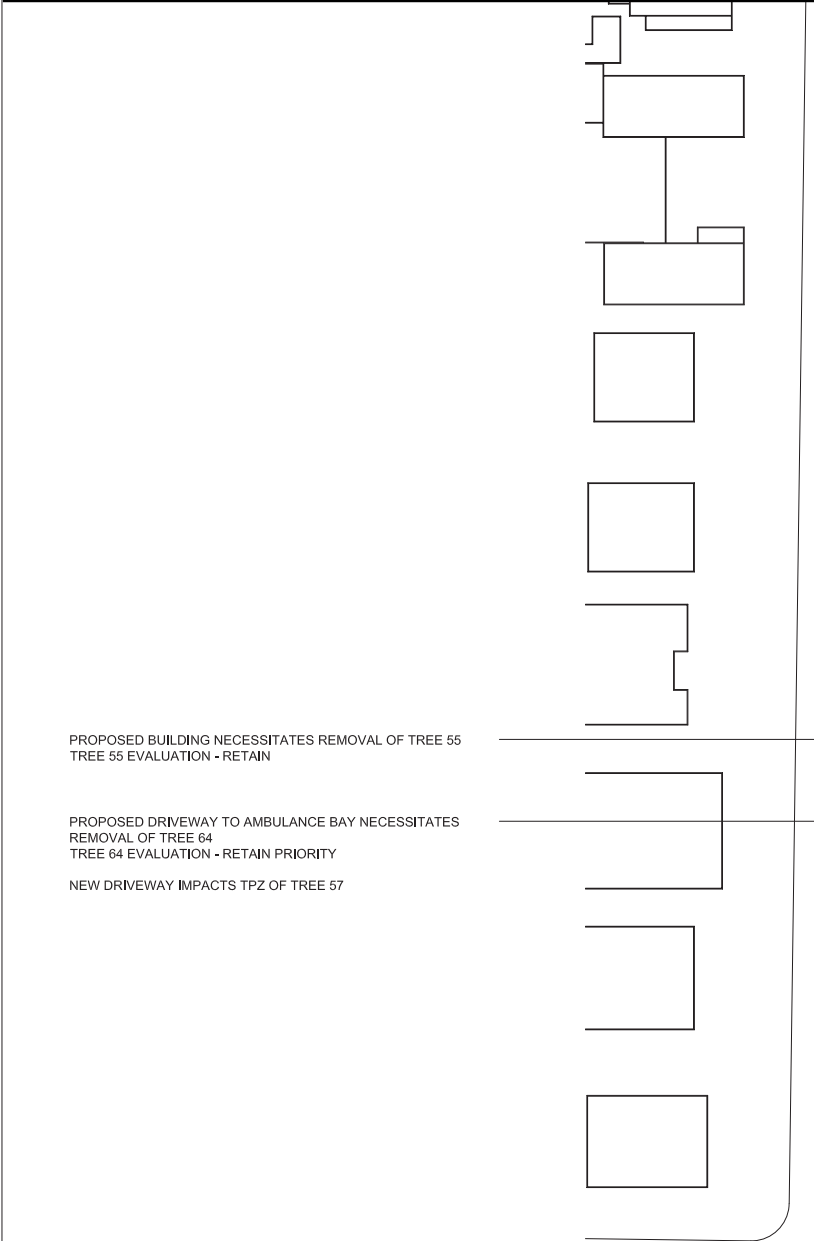


DETERMINED – APPROVAL

REF Approval No: 17/2023/B

Date: 2/9/2024

Signed by: 



PROPOSED BUILDING NECESSITATES REMOVAL OF TREE 55  
TREE 55 EVALUATION - RETAIN

PROPOSED DRIVEWAY TO AMBULANCE BAY NECESSITATES  
REMOVAL OF TREE 64  
TREE 64 EVALUATION - RETAIN PRIORITY

NEW DRIVEWAY IMPACTS TPZ OF TREE 57





TREE PROTECTION NOTES:

- IDENTIFY AND LOCATE ALL SIGNIFICANT TREE ROOTS IN WORKS AREA. IF WORKS ARE TO IMPACT ON TREES TO BE RETAINED ROOTS NOTIFY THE SUPERINTENDENT PRIOR TO UNDERTAKING ANY WORKS.
- ENSURE ALL TREE PROTECTION MEASURES ARE IN PLACE PRIOR TO UNDERTAKEN ANY WORKS.
- SETOUT AND LEVELS OF ALL BUILT ELEMENTS TO BE INSPECTED BY SUPERINTENDENT PRIOR TO COMMENCEMENT OF WORKS.

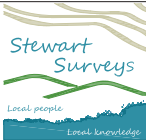
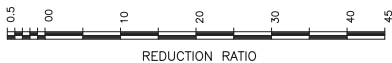
WORKS RESTRICTIONS IN TREE PROTECTION ZONE

- ALL MASS PLANTING IN TREE PROTECTION ZONES TO BE UNDERTAKEN BY HAND, USING TUBE STOCK POT SIZE PLANTS ONLY.
- SETOUT OF PLANTING WITHIN TREE PROTECTION ZONES TO BE CONFIRMED WITH SUPERINTENDANT PRIOR TO INSTALLATION.
- NO EXCAVATION FOR PATHS, WALLS, SUBSOIL DRAINAGE OR THE LIKE WITHIN TREE PROTECTION ZONES. WORKS ARE TO BUILT ON TOP OF EXISTING GRADES UNLESS OTHERWISE DIRECTED BY SUPERINTENDANT.

LEGEND

|   |  |
|---|--|
|  | EXISTING TREE TO BE RETAINED<br>(MP SITE SURVEY)                             |
|  | TREE TO BE REMOVED (LISTED IN WADE RYAN<br>CONTRACTING ARBORICULTURE REPORT) |
|  | TREE PROTECTION ZONE (TPZ)<br>REF. WADE RYAN CONTRACTING                     |
|  | TREE NUMBER REFERENCED IN WADE RYAN<br>CONTRACTING ARBORICULTURE REPORT      |

|       |         |                                 |
|-------|---------|---------------------------------|
| D     | 26.7.24 | TREE 17 ADDED TO BE REMOVED     |
| C     | 18.7.24 | ALTERNATIVE CENTRAL COURTYARD   |
| B     | 20.6.24 | TREE 7, 8 & 11-15 TO BE REMOVED |
| A     | 7.6.24  | 100% DOCUMENTATION              |
| Adv   | 17.5.24 | 100% COORDINATION ISSUE         |
| Issue | Date    | Description                     |



**STEWART SURVEYS**  
Pty Ltd Inc in NSW ABN 65 002 886 508  
109 Conadilly Street  
P.O. Box 592  
GUNNDAH NSW 2380  
T 02 67422966 F 02 67420684  
E office@stewartsurveys.com

Client



Project  
GUNNDAH HOSPITAL REDEVELOPMENT  
Title  
TREE RETENTION & REMOVAL  
PLAN

|                         |              |         |      |
|-------------------------|--------------|---------|------|
| Date                    | 26 JULY 2024 | Job No. | 5668 |
| Drawing number          | L03          | Issue   | D    |
| DRAWING SHEET SIZE = A1 |              |         |      |



DETERMINED – APPROVAL

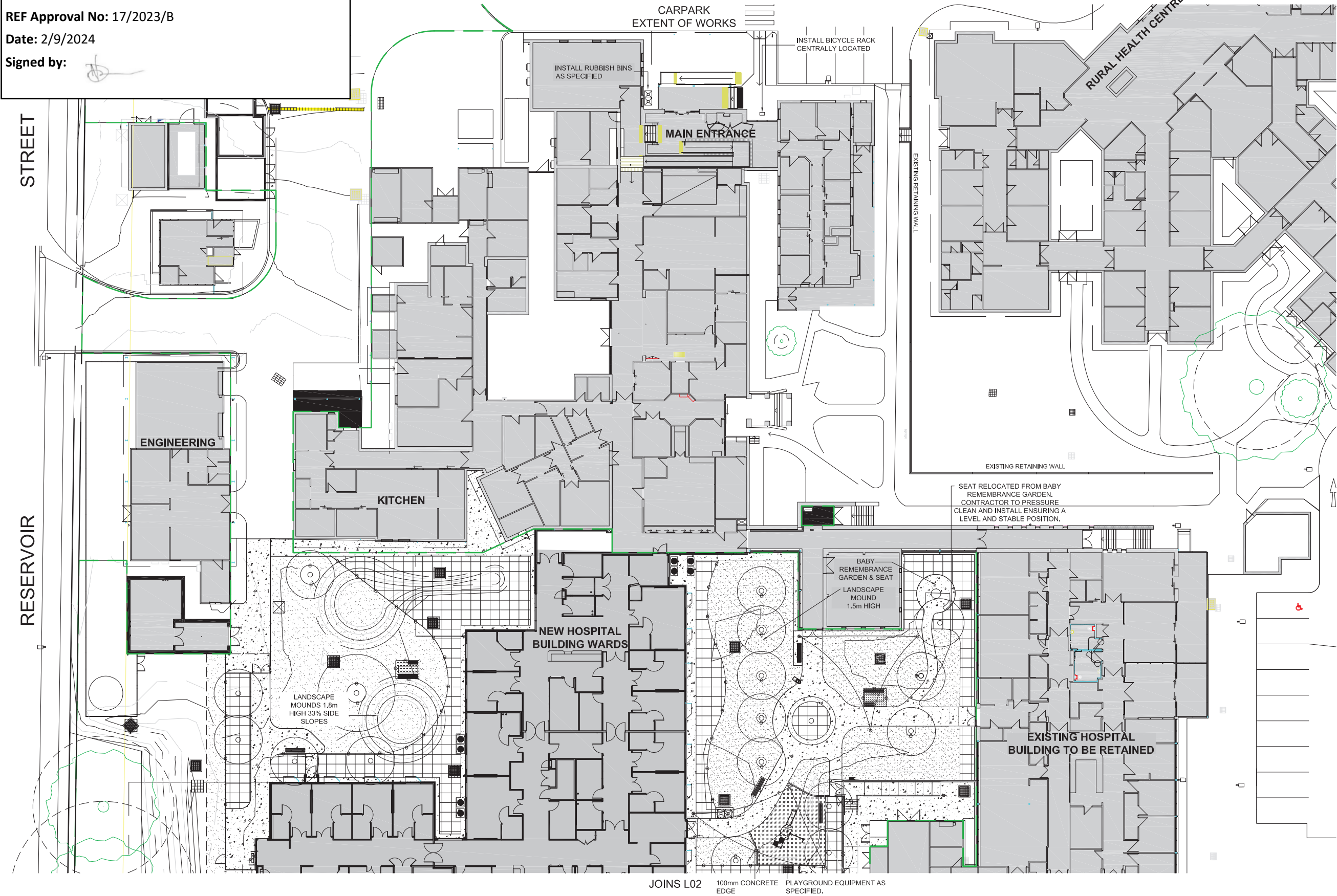
REF Approval No: 17/2023/B

Date: 2/9/2024

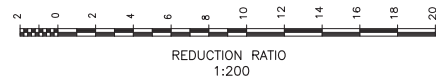
Signed by:



PLAN TO BE READ IN CONJUNCTION WITH  
LEGEND AND SPECIFICATION ON SHEET L02  
REFER TO PLANT SCHEDULE SHEET L08 FOR  
TREE SPECIES.



|       |         |                               |
|-------|---------|-------------------------------|
| B     | 18.7.24 | ALTERNATIVE CENTRAL COURTYARD |
| A     | 7.6.24  | 100% DOCUMENTATION            |
| Adv   | 17.5.24 | 100% COORDINATION ISSUE       |
| Adv   | 22.3.24 | 70% DOCUMENTATION ISSUE       |
| Adv   | 15.2.24 | 40% DOCUMENTATION ISSUE       |
| Issue | Date    | Description                   |



Landscape Architect:

**STEWART SURVEYS**  
Pty Ltd Inc In NSW ABN 65 002 886 508  
109 Conadilly Street  
P.O. Box 592  
GUNNEDAH NSW 2380  
T 02 67422966 F 02 67420684  
E office@stewartsurveys.com

Surveying, Environmental & Landscape Architecture

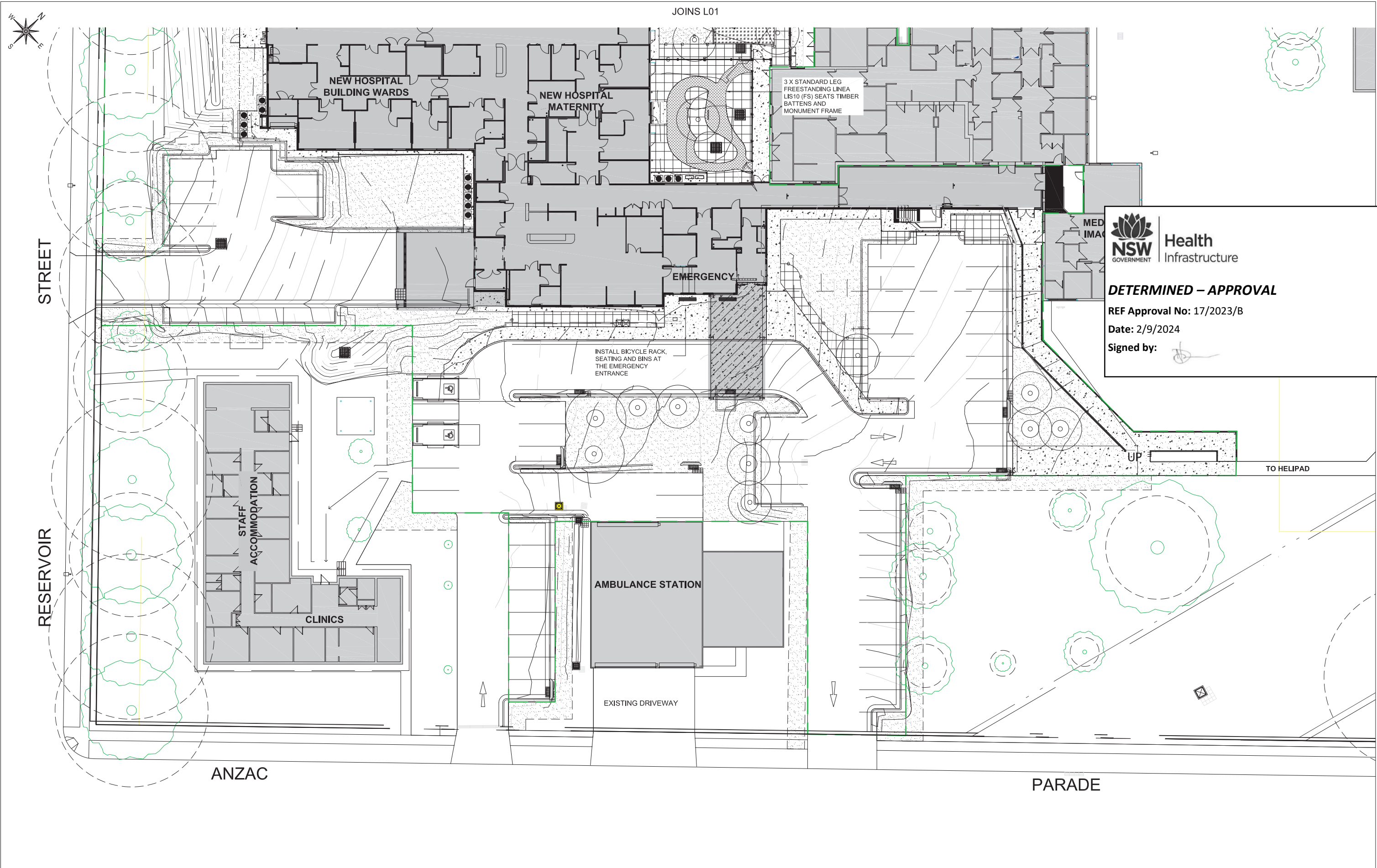


Project  
GUNNEDAH HOSPITAL REDEVELOPMENT

Title  
**LANDSCAPE GENERAL  
ARRANGEMENTS AND FINISHES**

|                              |                   |
|------------------------------|-------------------|
| Date<br>18 JULY 2024         | Job No.<br>5668   |
| Drawing number<br><b>L04</b> | Issue<br><b>B</b> |
| DRAWING SHEET SIZE = A1      |                   |





Health  
Infrastructure

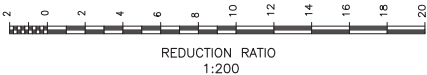
**DETERMINED – APPROVAL**

REF Approval No: 17/2023/B

Date: 2/9/2024

Signed by:

|       |         |                               |
|-------|---------|-------------------------------|
| C     | 18.7.24 | HELIPAD UPDATED               |
| B     | 18.7.24 | ALTERNATIVE CENTRAL COURTYARD |
| A     | 7.6.24  | 100% DOCUMENTATION            |
| Adv   | 17.5.24 | 100% COORDINATION ISSUE       |
| Adv   | 22.3.24 | 70% DOCUMENTATION ISSUE       |
| Issue | Date    | Description                   |



Landscape  
Architect:



**STEWART SURVEYS**  
Pty Ltd Inc in NSW ABN 65 002 886 508  
109 Conadilly Street  
P.O. Box 592  
GUNNEDAH NSW 2380  
T 02 67422966 F 02 67420684  
E office@stewartsurveys.com

Client



Project

GUNNEDAH HOSPITAL REDEVELOPMENT

Title

**LANDSCAPE GENERAL  
ARRANGEMENTS AND FINISHES**

Date

18 JULY 2024

Job No.

5668

Drawing number

**L05**

Issue

**C**

DRAWING SHEET SIZE = A1

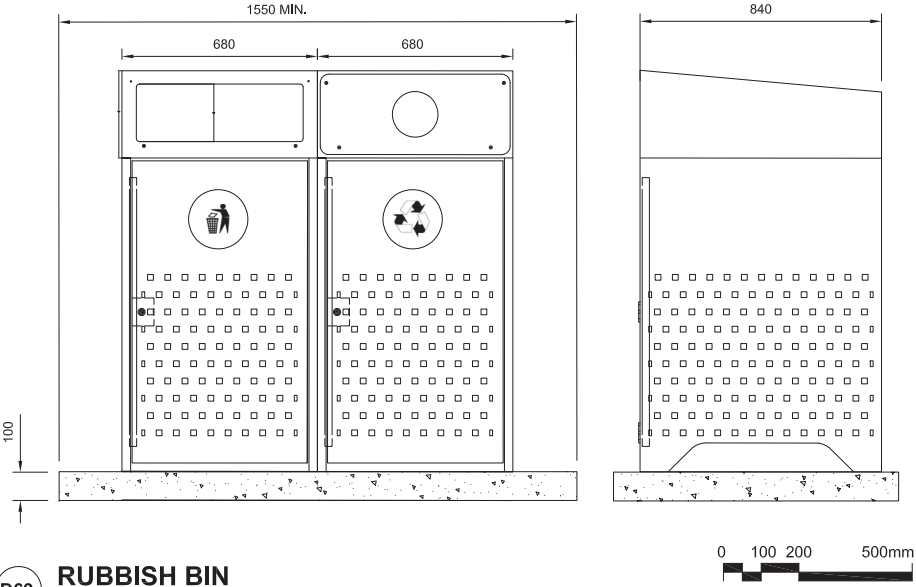


FURNITURE SCHEDULE

| SYMBOL | FURNITURE DESCRIPTION                 | QTY | SUPPLIER                   | LOCATION                                  | FOOTING                        |
|--------|---------------------------------------|-----|----------------------------|---|--------------------------------|
|        | PARK SEAT WITH ARM & BACK REST        | 5   | GRILLEX                    | CONCRETE PAVEMENT                         | SURFACE MOUNT                  |
|        | PARK SEAT WITH ARM & BACK REST        | 1   | GRILLEX                    | DECOMPOSED GRANITE ORGANIC SOFTFALL GRASS | SUB-SURFACE MOUNT WITH FOOTING |
|        | BICYCLE RACK                          | 2   | GRILLEX                    | CONCRETE PAVEMENT (1 AT EACH ENTRY)       | SURFACE MOUNT                  |
|        | PICNIC SETTING (ACCESSIBLE) & SHELTER | 2   | GRILLEX                    | DECOMPOSED GRANITE                        | SUB-SURFACE MOUNT WITH FOOTING |
|        | WATER REFILL STATION & BUBBLER        | 1   | CIVIQ TBC                  | CONCRETE PAVEMENT (CENTRAL COURTYARD)     | REFER DETAIL                   |
|        | FREE STANDING MOVABLE SEAT            | 3   | STREET FURNITURE AUSTRALIA | BIRTHING COURTYARD                        | NOT APPLICABLE                 |

\* REFER TO LANDSCAPE DETAILS AND SPECIFICATION FOR ALL PRODUCT DETAILS AND INSTALL INFORMATION

DUAL BIN SHALL BE INTEGRA 240LT DUAL BIN ENCLOSURE SUPPLIED BY UNISITE. INSTALL TO MANUFACTURERS RECOMMENDATIONS. 125mm MIN. SETBACK FROM BOLT FIXING TO EDGE OF SLAB



RUBBISH BIN

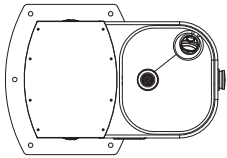
SCALE 1:10

BUBBLER TO BE CIVIQ AQ-PS1400BF  
AQUAFIL PULSE SENIOR 1400BF;  
DRINKING FOUNTAIN & BOTTLE  
REFILL STATION (WHEELCHAIR  
ACCESSIBLE DDA BASIN).

ABORIGINAL ARTWORK DESIGN TBC

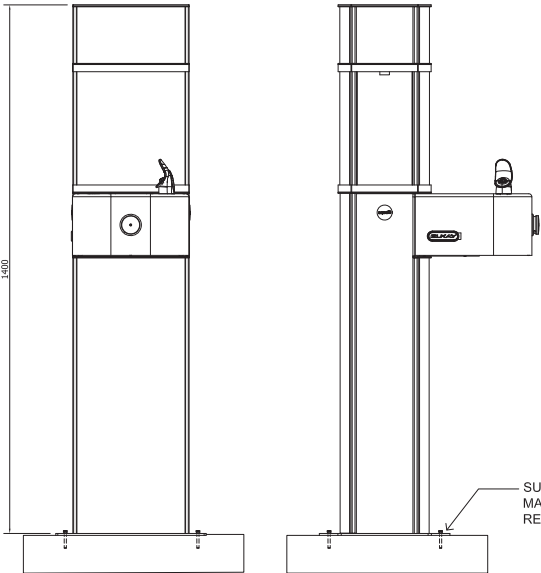
INSTALL TO MANUFACTURER'S  
RECOMMENDATIONS.

PLAN VIEW



FRONT VIEW

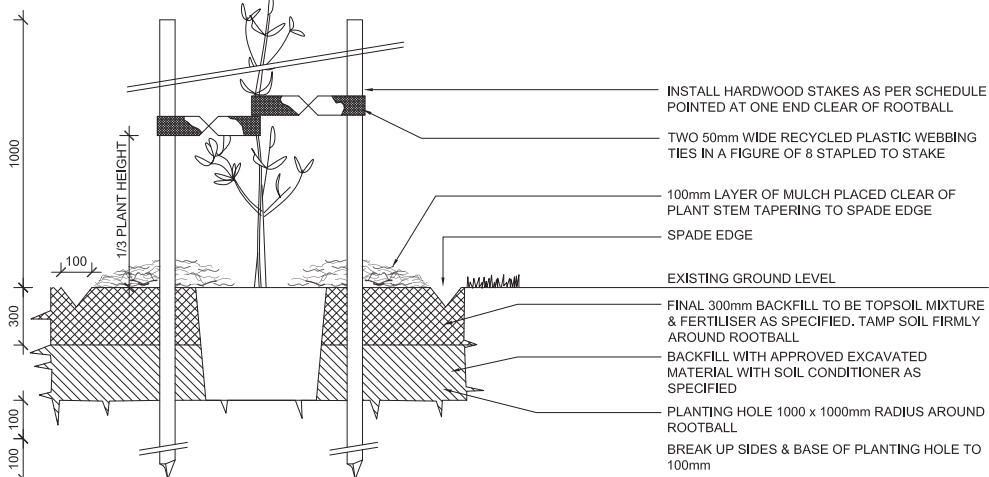
SIDE VIEW



DRINKING FOUNTAIN

SCALE 1:10

FOR EXISTING TREES IN GRASS INSTALL  
MULCH AND SPADE EDGE ONLY



5-100L TREE IN GRASS

SCALE 1:20

0 100 200 500 1000mm

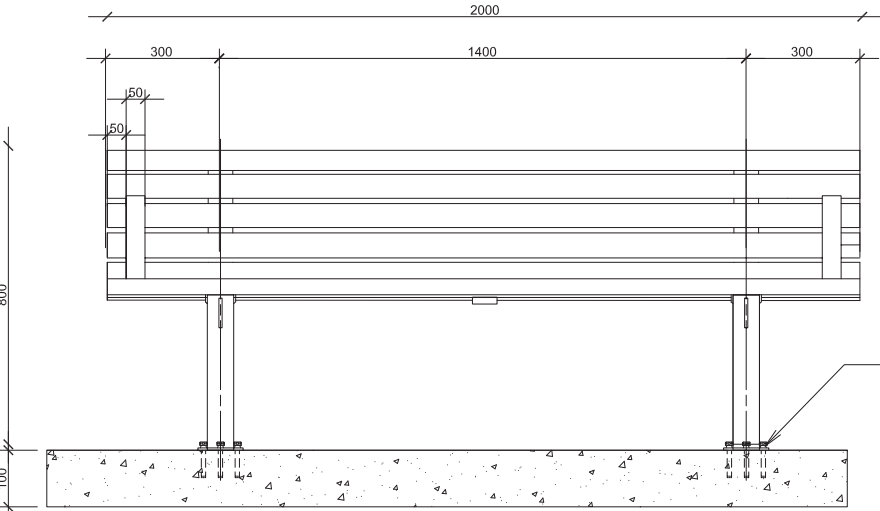


DETERMINED – APPROVAL

REF Approval No: 17/2023/B

Date: 2/9/2024

Signed by:



ELEVATION

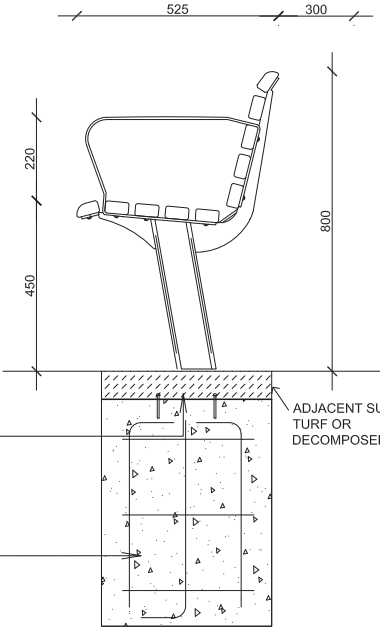
SEAT TO FINISH 300mm FROM CHANGE IN  
MATERIAL UNLESS OTHERWISE SHOWN ON PLAN.  
PARK SEAT WITH BACK & ARMRESTS SHALL BE  
INTEGRA EX PARK SEAT 2m WITH ARMRESTS -  
TIMBER FINISH WITH POWERCOAT ARMRESTS -  
COLOUR MONUMENT AS SUPPLIED BY GRILLEX.  
INSTALL AS SPECIFIED BY MANUFACTURER

4 WEDGE ANCHORS PER LEG TO  
MANUFACTURERS RECOMMENDATIONS  
CONFIRM PAVEMENT FALL PRIOR TO  
ORDERING TO ENSURE SEAT IS LEVEL

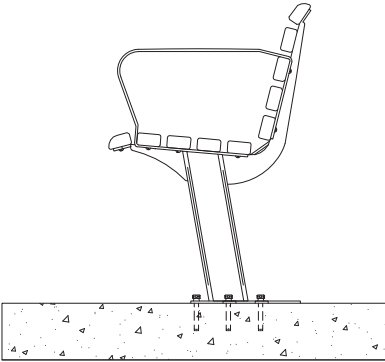
FIX STANDARD BASE PLATE  
WITH 4 No M12 MASONRY  
ANCHORS TO MANUFACTURERS  
SPECIFICATION

450X600mm CONCRETEFOOTING  
AND RAGBOLT ASSEMBLY TO  
MANUFACTURERS SPECIFICATION

SUBSURFACE MOUNTED



SURFACE MOUNTED



0 100 200 500mm

Landscape Architect:



STEWART SURVEYS

Pty Ltd Inc In NSW ABN 65 002 886 508  
109 Conadilly Street  
P.O. Box 592  
GUNNEDAH NSW 2380  
T 02 67422966 F 02 67420684  
E office@stewartsurveys.com

Client



Project

GUNNEDAH HOSPITAL REDEVELOPMENT

Title

LANDSCAPE DETAILS

Date

18 JULY 2024

Job No.

5668

Drawing number

L12

Issue

B

DRAWING SHEET SIZE = A1

|       |         |                               |
|-------|---------|-------------------------------|
|       |         |                               |
|       |         |                               |
|       |         |                               |
| B     | 18.7.24 | ALTERNATIVE CENTRAL COURTYARD |
| Issue | Date    | Description                   |